

University of Florida Monroe County Extension

UF | **IFAS Extension**
UNIVERSITY of FLORIDA



Plant Clinics

Horticultural questions answered by
Monroe County Master Gardeners



How do the plant clinics work?

Stop by with a insect or plant sample that shows the problem.



TURF



- Bring turf samples with soil from the margin where the declining and healthy turf meet.
- Enclose entire sample in a sealed plastic Ziploc baggie.
- Know what fertilizers and chemicals have been applied to the turf.

PLANTS



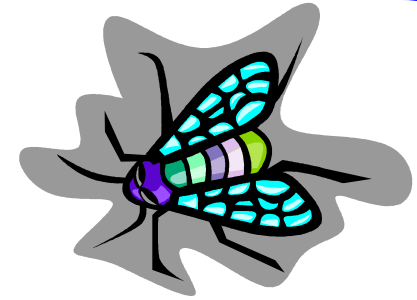
- Bring fresh samples that show the symptoms you are concerned about.
- Take note if it is a younger or older leaf and how much of the plant is affected.
- Know what fertilizers and chemicals have been applied around the plant.

FLESHY VEGETABLES, FRUITS, AND MUSHROOMS

- DO NOT place produce in plastic bags!!
- Wrap each sample in newspaper.
- Place sample in a box to prevent crushing.
- Collect several specimens, if possible.



INSECTS



Kill flying and crawling insects before bringing to the Plant Clinic:

- **Place the insect in a container that has 70% rubbing alcohol or**
- **Place the insect in a plastic Ziploc baggie and put in the freezer overnight.**
- **Sedentary insects can be brought alive in plastic Ziploc baggies.**

For more information

University of Florida / IFAS

Monroe County Extension Services

1100 Simonton Street, #2-260

Key West, FL 33040

305 - 292 - 4501

Website – <http://monroe.ifas.ufl.edu>

E-mail: monroe@ifas.ufl.edu

