

University of Florida/IFAS/Monroe County Extension

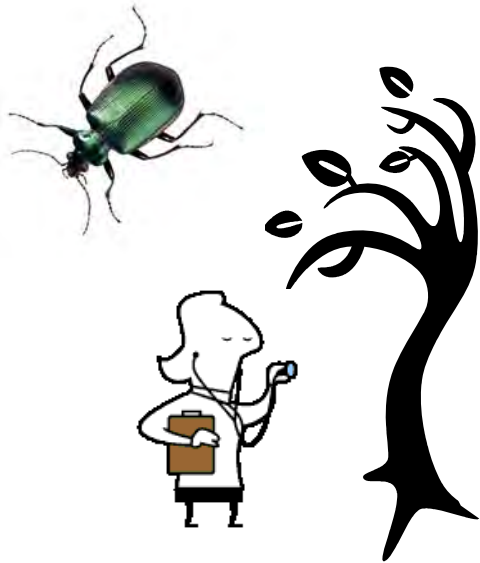
# Key Largo Plant Clinic

9:00 a.m. - 12:00 p.m.

*Murray E. Nelson Government & Cultural Center*

*Extension Office, 102050 Overseas Hwy., 2<sup>nd</sup> Floor, Suite 244, Key Largo*

Bring insects for identification or sick plants for diagnosis.



*2016-17  
First & Third  
Wednesdays:*

October 5 & 19  
November 2 & 16  
December 7 & 21  
January 4 & 18, 2017  
February 1 & 15  
March 1 & 15  
April 5 & 19

For more information call 305-292-4501 or  
visit our website at <http://monroe.ifas.ufl.edu>



UF/IFAS/Monroe County Extension  
1100 Simonton Street, #2-260  
Key West, FL 33040  
305-292-4501  
E-mail: [monroe@ifas.ufl.edu](mailto:monroe@ifas.ufl.edu)

**UF** | IFAS Extension  
UNIVERSITY of FLORIDA

