

University of Florida/IFAS/Monroe County Extension

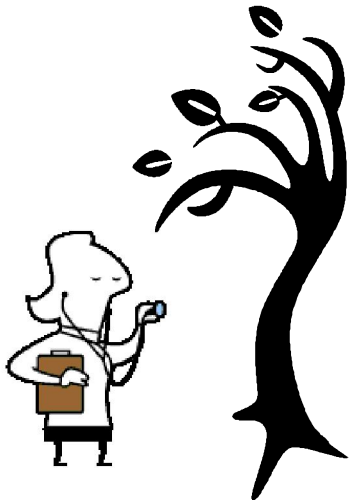
Big Pine Key Plant Clinic

9 a.m. - noon

Big Pine Key Academy

30220 Overseas Highway—turn at entrance to Flea Market

Bring insects or sick plants for diagnosis
or insects or plants for identification.



Saturdays:

October 17

November 21

December 19

January 16, 2010

February 20

March 20

April 17

For more information call 305-292-4501 or
visit our Web site at <http://Monroe.ifas.ufl.edu>



UF/IFAS/ Monroe County Extension
1100 Simonton Street, #2-260
Key West, FL 33040
305-292-4501



UF UNIVERSITY of
FLORIDA
IFAS Extension